



GUIDE TO STARTING THE MINISEREVE MS-02 & Konnex Remote Interface for Mobile



Quick start

Enable your KNX Server BX-MS02 to communicate with Krim

BX-MS02 has a default network setting with DHCP to receive automatically an IP address.

Please, connect power supply (12 or 24 VDC) and the network cable to enable IP communication.



Find your KNX server

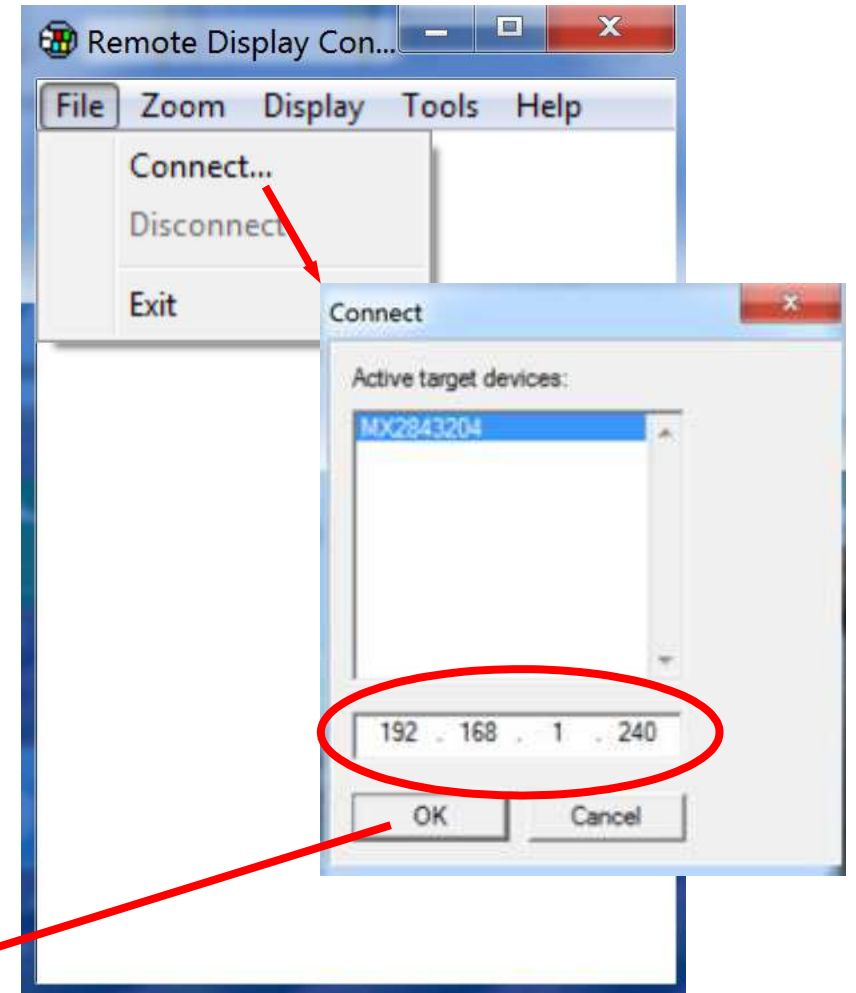
How to use CERHOST application to look for a Blumotix Server



CERHOST

Please, lunch CERHOST.EXE on your PC and select CONNECT from File menu. A positive finding fills the box with name and assigned IP address.

Press OK if you want to see the virtual display of that server.

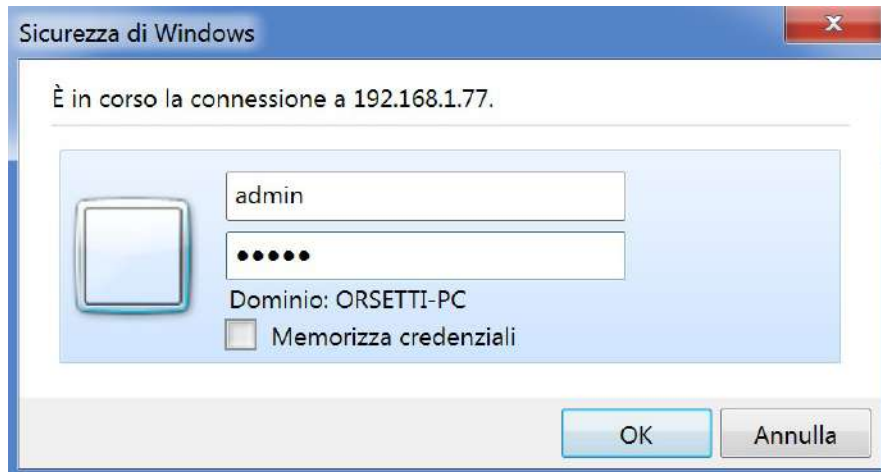


As you can see it is Windows...



Starting setup [1]

Open the Webserver at IP address you see with CERHOST



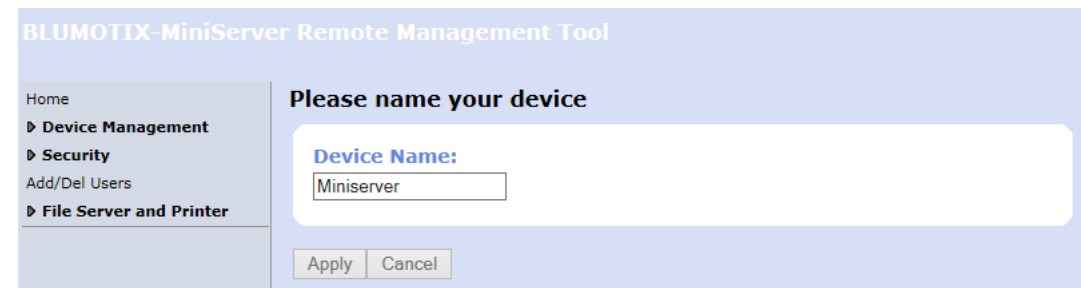
Please, open the Management Tool with standard keys:

User = admin

Password = admin

First step is to update the Device Name.

Original name **Locator** must be changed with your Nickname.



Starting setup [2]

Set a static IP address

BLUMOTIX-MiniServer Remote Management Tool

Home

▶ **Device Management**

- Set Time
- Configure Network
- HostName Config

▶ **Security**

- Add/Del Users

▶ **File Server and Printer**

BLUMOTIX-MiniServer

Use this page to configure networking

ENET1

DHCP Enabled:

IP Address:

Subnet:

DNS1:

DNS2:

WINS1:

WINS2:

GATEWAY:

*It should be important to remove DHCP support and set a static IP.
Don't forget to set GATEWAY to permit a 4G connection with Krim.*



Starting setup [3]

Enable Internet time server

BLUMOTIX-MiniServer Remote Management Tool

Home

- ▶ **Device Management**
 - Set Time
 - Configure Network
 - HostName Config
- ▶ **Security**
 - Add/Del Users
- ▶ **File Server and Printer**

Set Time Method

To maintain the system time automatically, select **Synchronize to Internet time server**.

To set time manually, select **Set time manually**.

Time synchronization method

Synchronize to Internet time server

Set time manually

Internet time server

To synchronize the BLUMOTIX-MiniServer system clock with a public time server, specify the name of a Simple Network Time Protocol (SNTP) server. You can obtain a time server name from your ISP.

Time server name:

Base station time zone

Establish the time zone for the base station system clock.

Set time zone:

In order to obtain an automatic adjustment of clock from Internet it is recommended to enable Internet time server.



Starting setup [4]

Change password

BLUMOTIX-MiniServer Remote Management Tool

Home

- ▶ Device Management
- ▶ Security
 - Change Password
- Add/Del Users
- ▶ File Server and Printer

Change Password

The password is used to restrict access to the Windows CE Remote Management Tool. This page will change the 'ADMIN' user account password.

Current password:

New password (3-16 characters):

Confirm new password:

Apply Cancel

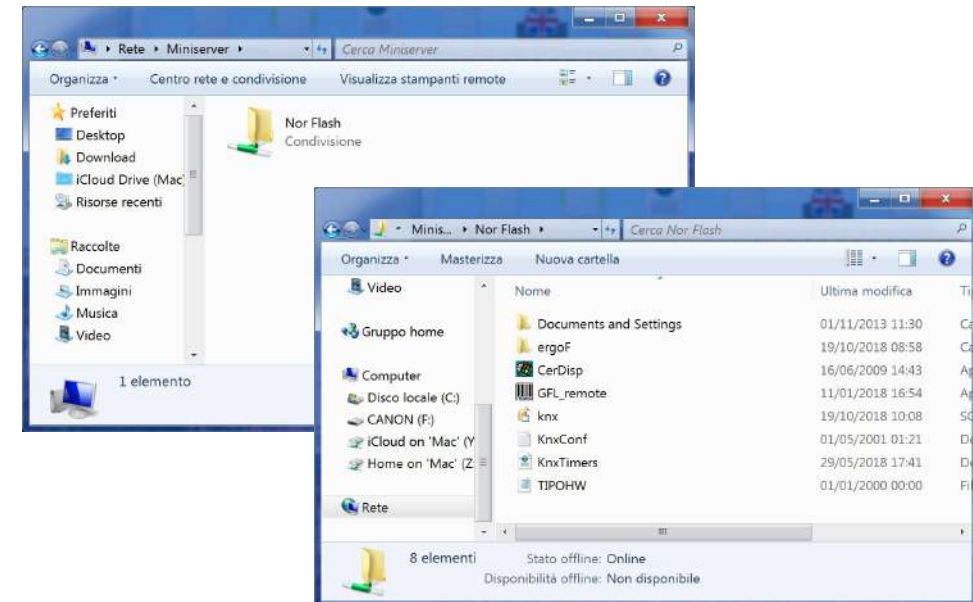
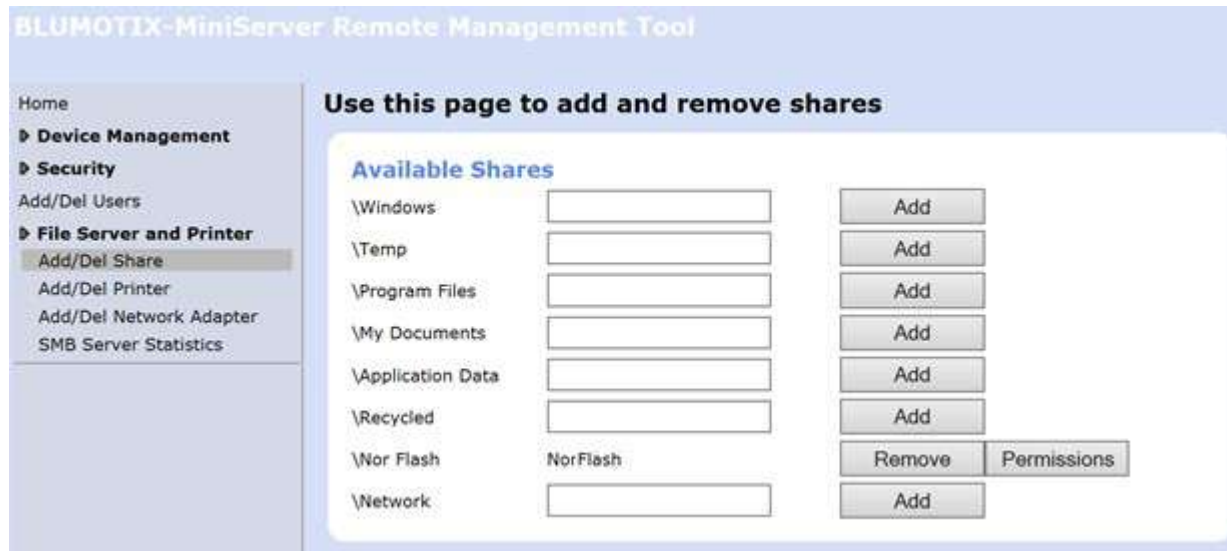
It is possible to update the standard password with your personal key.



Starting setup [5]

Enable sharing folder

If you want manage the program files with File Explorer, by exchanging data through shared folder, it is mandatory to enable \NorFlash.



ADSL Router setting

Open Ports to enable 4G communication

If you want to enable the available services on 4G you must redirect following ports to your Miniserver.



KRIM communicates through the ports 8081 and 8082 (by default) with TCP protocol.

It is possible to open two different adjacent ports by specifying the first one when Krim calls the server address:

*I.E: 192.168.1.77:**12345***



SMB is the service that support the shared folders.

Open and redirect the ports 139 and 445 (TCP) to have SMB in Internet.

User and Password are the same you set in Starting setup.



CERHOST is the Virtual Display to check Miniserver status.

Open and redirect the ports 987(TCP) to have CERHOST in Internet.

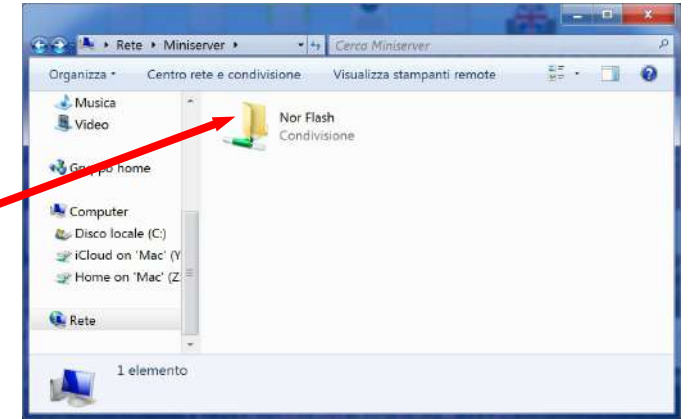


How to install your Synoptic

Save your *SQLITE* and *PWD* files inside *Nor Flash*

Open **File Explorer** and find your KNX server with `\\Device Name` or `\\ IP address`...

Then copy files inside *Nor Flash* with drag and drop!

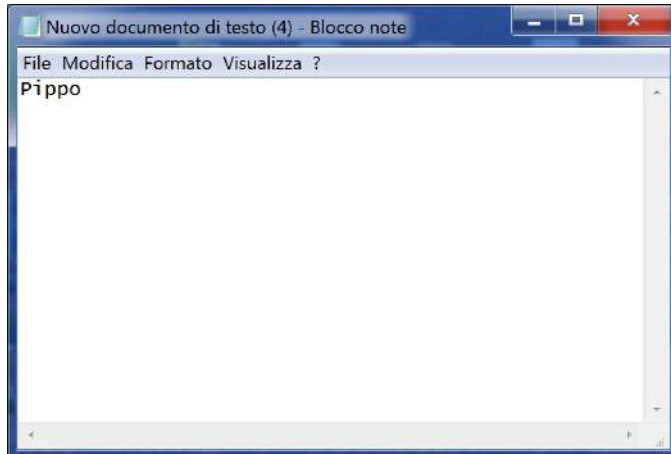
A screenshot of the 'Krim setup' configuration window. It features a 'Krim' logo at the top left. Below it, there are several input fields: 'Account ID' with the value 'Free name', 'Username', 'Password', and 'Server Address' with the value 'IP address'. A 'Save Settings' button is located at the bottom right.

Both files must have the same **NAME** and different extension: *SQLITE* and *PWD*.
SQLITE is the result of your design with Sentiero.
PWD is a text file where you must digit the access **PASSWORD**.

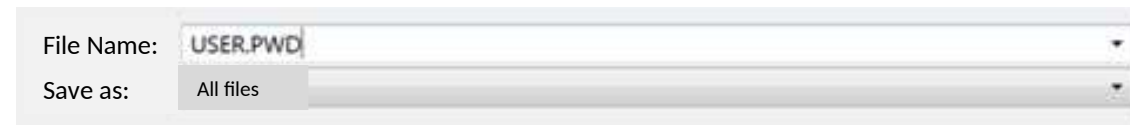


How to create PWD

Open Text Editor and digit your password



*Please, don't type BAR or RETURN.
Check that number of characters is equal to
the length of the file.*



*Please, execute SAVE AS and select ALL FILES,
then you can save with .PWD extension.*

